

LABOUR FORCE SURVEY 2018



Labour Force
Participation Rate (LFPR):
65.4%

Employment to
Population Ratio:
59.7%

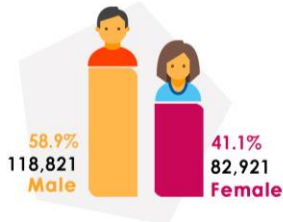
Unemployment
Rate (LU1):
8.7%

Employed (E):

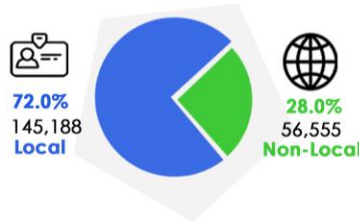
“ Persons in employment are defined as an individual who are 15 years and above, during in a given reference period:

- a) were engaged in any activity to produce goods or provide services for pay or profit; and
- b) employed persons “not at work” due to temporary absence from a job, or to working-time arrangements (such as shift work, flexitime and compensatory leave for overtime). ”

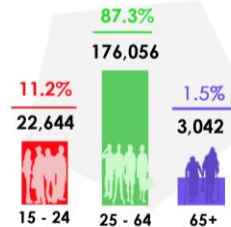
By Sex



By Residential Status



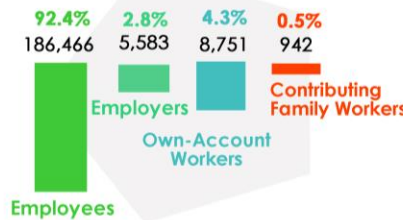
By Age Group



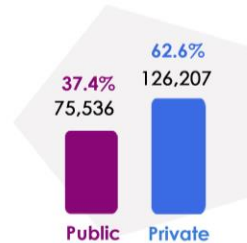
By Type of Economic Activity



By Employment Status



By Sector



By Occupation



Unemployed (U):

“ An individual aged 15 years and over who,

- a) were not in employment;
- b) carried out activities to seek employment during specified period; and
- c) were currently available to take up employment given a job opportunity.”

By Sex

